

MICHAELS CUE BID....

USE AND ABUSE.

SANDRA SARNOW

- Michaels is a cue-bid that promises a two-suited hand, with at least five cards in each suit.

Benefit: Being able to inform my partner I have 2 suits with only 1 bid is extremely useful.

Before we review the bids, let's consider some important factors:

- + First of all, Michaels cue bid guarantees at least 5 cards in each suit, **not less than 5.**

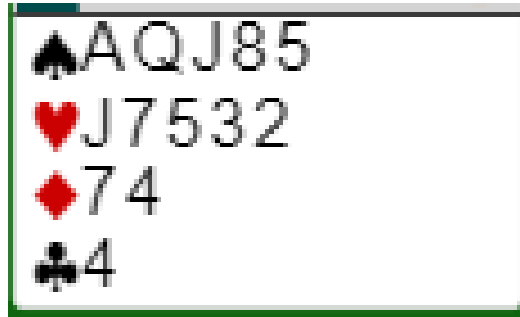


♠	J42
♥	AKJ43
♦	86432
♣	

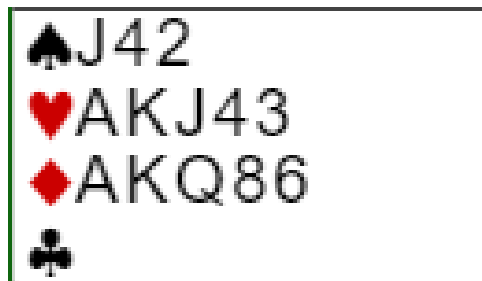
♠	K1098643
♥	AK84
♦	Q
♣	K



- Strength can vary either less than an opening hand (up to 11 hcp)



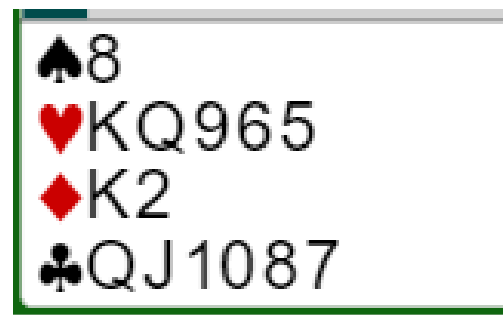
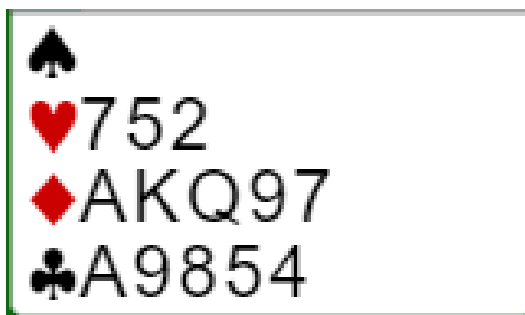
- or a very strong hand (17+ hcp).



- With 12-16 hcp it is better to bid your suits.

• Michaels cue bid considers only some two suited hands, and it Works very well in conjunction with

- Unusual 2NT and 2 lower unbid



which are other conventions for two-suited overcalls

will be reviewed later

OPPONENT'S OPENING BID	MY BID	SHOWING	
1 ♣	2 ♣	5+ ♥ and 5+ ♠	A cuebid of the opponent's minor shows BOTH MAJORS.
1 ♦	2 ♦	5+ ♥ and 5+ ♠	A cuebid of the opponent's minor shows BOTH MAJORS
1 ♥	2 ♥	5+ ♠ and 5+minor	A cuebid of the opponent's major shows the other major and either minor.
1 ♠	2 ♠	5+ ♥ and 5+minor	A cuebid of the opponent's major shows the other major and either minor.

▶ The big questions for Michaels cuebids are:

▶ 1) What strength?

▶ 2) What suit quality?

▶ 3) What **COMES NEXT?**



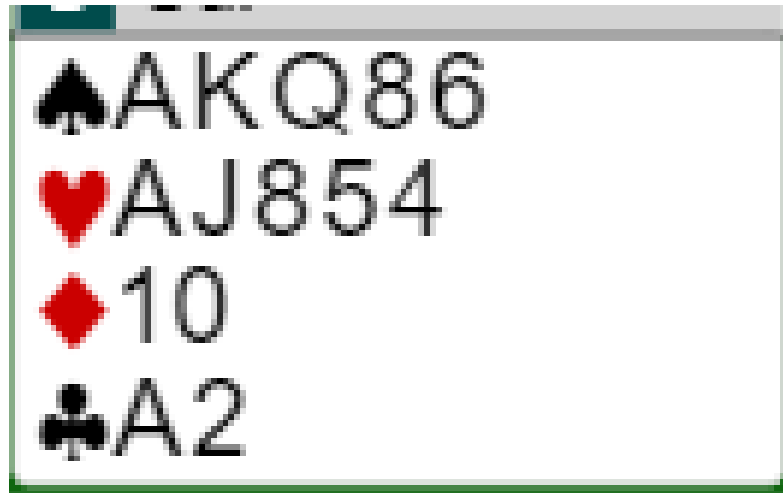
What Strength?

Usually, a Michaels cue bid is made with a preemptive (weakish hand), such as:



Over the opponent's 1-of-a-minor opening, I would bid 2-of- their-minor with this hand (planning to accept whatever decision partner makes).

It can also be made with a very strong hand:



Over the opponent's 1-of-a-minor opening, I would bid 2-of-their-minor with this hand, this time i am planning to bid game in my partners suit.

What to do with medium hands?



Discuss it with your partner, we suggest that with medium hands you should bid your suits, that way it will be easier for you to define the adequate level to play.

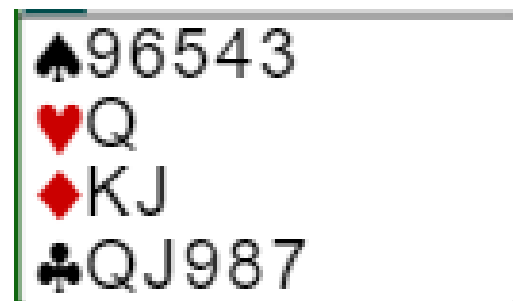
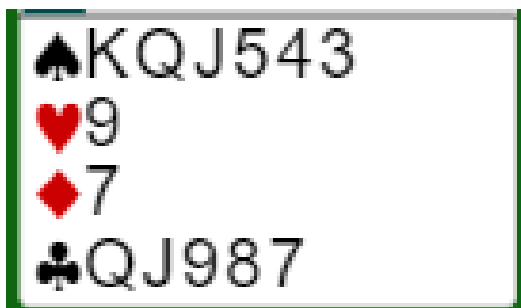


What Suit Quality?

First of all, we suggest that if the bid is weak.

it is preferable that the

HCP are in the long suits.



Vulnerability



As alwaysbe careful

What comes next..... how do we respond to a Michaels cue bid?

After 1♣-2♣ or 1♦-2♦,

when both of your partner's suits are known,

simply pick your best (longest) major and bid to the appropriate level.

With equal length in the majors, choose the better one.

What level to choose?

Just like when you respond to your partner's double...

With a very weak hand (0-7 hcp) bid your best fit at the lowest level.

With 8-11 hcp bid skipping a level and with an opening hand bid game.

Don't forget to take into consideration that there are plenty of times when a weak 5-5 opposite another weak 5-5 produces game on the 10-card fit.

So consider also distributional values not only high card points when you respond to a Michaels Cue Bid.

Now, What happens when the Michaels advancer does not have fit in any of his partner's suits?

If your hand is weak, get away from the problem ASAP.
Bid your best suit at the cheapest level.

O	N	E	S
1♦	2♦	Paso	
S Sur			
♠Q4			
♥76			
♦Q876			
♣J10987			



Don't worry, most of the time your opponent will save you from the problem.

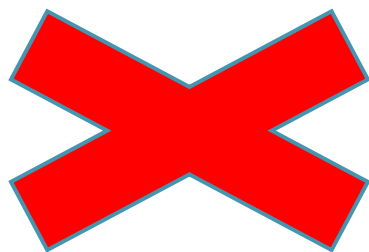
If you have a constructive hand, you can bid NT.

O	N	E	S
1♦	2♦	Paso	
S	Sur		
♠ Q4			
♥ K6			
♦ KQ87			
♣ A10987			

Remember, If your hand is weak or strong enough only to play in your partners minor, you should bid 3♣ that asks your partner to pass if his second suit is clubs or correct to 3♦ if his second suit is diamonds.

O	N	E	S
1♠	2♠	Paso	
S Sur			
♠Q4			
♥106			
♦Q876			
♣J10987			



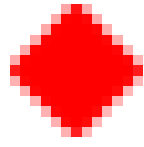


Also, what if the opponents double your Michaels bid?

What does partner's pass mean? His redouble? His preference?

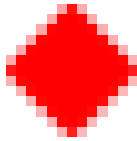
- Pass means I do not have 3 cards in any of your suits.
- Redouble means I am willing to play at two of their suit redoubled.
 - Bidding a suit is at least 3 cards fit.

UNUSUAL FOR MINORS

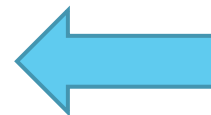
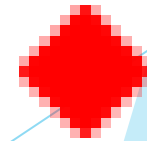


	O	N	E	S
	Paso Paso 1♠			
S	Sur			
♠	9			
♥	8			
♦	AJ975			
♣	KQ9642			

	O	N	E	S
			1♠	2ST
S	Sur			
♠	9			
♥	KQJ86			
♦	J9854			
♣	KQ			



TWO LOWER UNBID



OPPONENT'S OPENING BID	OUR BID	MEANING
1 ♣	2NT	5+ ♥ and 5+ ♦
1 ♦	2NT	5+ ♥ and 5+ ♣
1 ♥	2NT	5 ♣+ and 5+ ♦
1 ♠	2NT	5 ♣+ and 5+ ♦



TWO LOWER UNBID

Always H + the other minor



UNUSUAL 2NT over a major opening shows both minors



The big questions for Unusual for Minors and for Two Lower Unbid

Just as for Michaels cuebids,

- 1) What strength?
- 2) What suit quality?
- 3) What comes next?



Same situations as Michaels cue bid,
careful with vulnerability and with suits strength.

unlike 1♦ - 2♦

after you bid an unusual for minors or a two lower unbid,

You are always forcing partner to the 3-level

so be careful about suit quality:



Some special situations to consider:

Is Michaels still on ?

In balancing seat



O	N	E	S
1♦	Paso	Paso	2♦

S	Sur
♠	KJ976
♥	QJ876
♦	J10
♣	8

By a passed hand



O	N	E	S
1♦	Paso	Paso	2♦

S	Sur
♠	KJ976
♥	QJ876
♦	J10
♣	8

- ▶ After opponent in your left opens and opponent in your right bids 1NT



O	N	E	S
1♦ Paso 1ST 2♦			
S Sur			
♠KJ1098			
♥AQ1098			
♦J			
♣76			

- ▶ After opponent in your left opens and opponent in your right changes suits



O	N	E	S
1♦ Paso 1♠ 2♦			
S Sur			
♠98			
♥AQ1098			
♦J			
♣KJ1076			

Some special situations to consider:

Is Michaels still on ?

▶ After a strong artificial opening bid



▶ After a preemptive bid



Little different in balancing position

Is Michaels still on ?



Is unusual for minors still on?



Some play yes, some play no,

some play in that situation that 2NT
shows balanced 20-21 HCP



**FOR ME BRIDGE IS NOT ONLY A GAME,
IT IS A WAY OF LIFE**



sandra.sarnow@gmail.com

BBO sandrucha